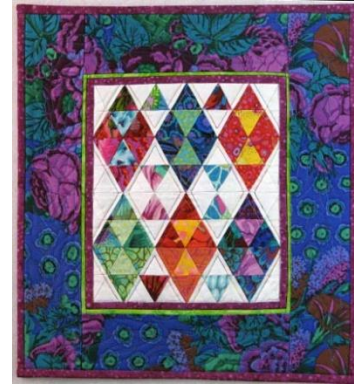


Terrie Sandelin

Miniatures in Minutes

<http://www.terriesandelin.com>



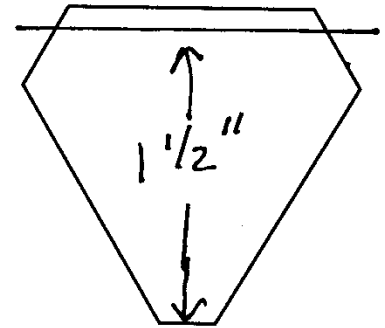
Pyramid Triangle Foundation: Stacked Diamonds

Finished Foundation: 7" by 8"

Finished Quilt: 12 1/2" by 13 1/2"

- *The Pyramid Triangle Foundation, pyramid triangle template, and instructions on the Fold and Sew method of assembly are included in Miniatures in Minutes (C&T Publishing).*
- Please note this correction to the **Pyramid Triangle patch template pattern** (on the foundation sheet pullout)

The template is just slightly off size. To fix, line up your ruler on the 1 1/2" mark on the short line that is just above the wording "Pyramid Triangle patch template pattern." Draw a line across the top of the template at the 1 1/2" mark. (Or, line up your ruler at the 1/8" line along the top edge and draw the correction line). This is the line you should use when tracing your template. **The illustration is intended only as a visual guide for where you should draw your correction. It is NOT a patch template drawn to size.**



Pyramid Triangle patch template pattern

Fabric Requirements:

Medium dark to dark prints – 18 different fabrics (scraps of each)

Light to light medium – 6 different fabrics (scraps of each)

White on white – 1/8 yard

Dark fabric for the first inner border and binding: 1/8 yard

Bright contrast fabric for super thin second inner border: 1/8 yard

Outer Border: 1/4 yard

Backing: 1 fat quarter

Cutting Directions:

Patch Size – Cut a 1 1/2" by 2" rectangle for each patch. **Use the Pyramid Triangle Patch template to trim the rectangles to size.**

Foundation

Medium dark to dark prints:

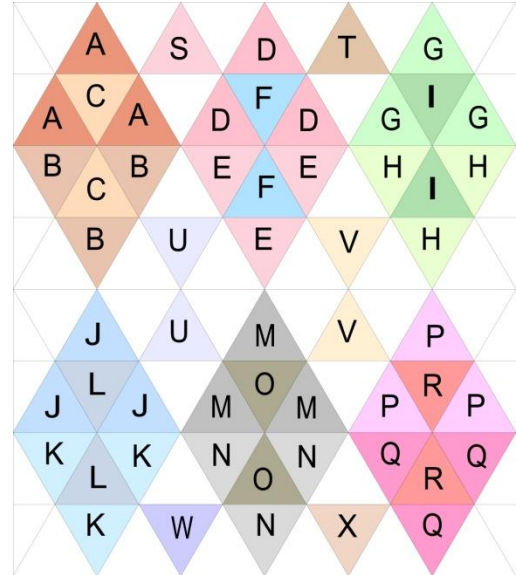
- For 12 of the fabrics (A, B, D, E, G, H, J, K, M, N, P, Q): cut a strip 1 1/2" by 6" – crosscut into 3 patches, 1 1/2" by 2".
- For 4 of the fabrics (S, T, W, X), cut a single patch 1 1/2" by 2".
- For 2 of the fabrics (U, V), cut a strip 1 1/2" by 4" – crosscut into 2 patches.

Light to light medium prints:

- For all 6 fabrics (C, F, I, L, O, R), cut a strip 1 1/2" by 4" – crosscut into 2 patches.

White on White Fabric:

- Cut strips 1 1/2" by a total of 96" in length – crosscut into 48 patches.



Borders

Size borders according to your own preference. I usually use a quarter-inch finished border for the inner border. The accent border in this quilt is 1/8" wide finished. Adjust the outer border to fit the quilting motif.

Red and White Variation

Fabric Requirements:

- For the foundation I used 18 white on red prints and 6 red on white prints.



Quilt Layout Diagram: Stacked Diamonds

