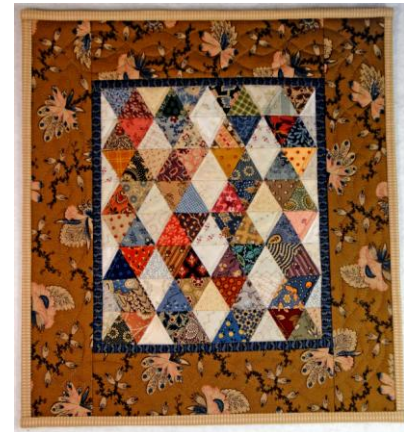


Terrie Sandelin

Miniatures in Minutes

<http://www.terriesandelin.com>

<http://terriesandelin.blogspot.com/>



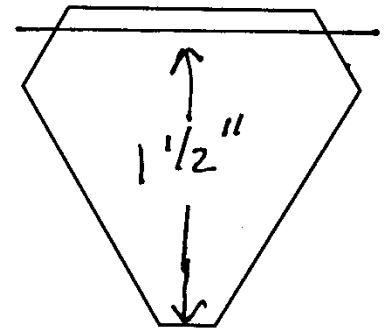
Pyramid Triangle Foundation: Zig Zag

Finished Foundation: 7" by 8"

Finished Quilt: 12 1/2" by 13 1/2"

- *The Pyramid Triangle Foundation, pyramid triangle template, and instructions on the Fold and Sew method of assembly are included in Miniatures in Minutes (C&T Publishing).*
- Please note this correction to the **Pyramid Triangle patch template pattern** (on the foundation sheet pullout)

The template is just slightly off size. To fix, line up your ruler on the 1 1/2" mark on the short line that is just above the wording "Pyramid Triangle patch template pattern." Draw a line across the top of the template at the 1 1/2" mark. (Or, line up your ruler at the 1/8" line along the top edge and draw the correction line). This is the line you should use when tracing your template. **The illustration is intended only as a visual guide for where you should draw your correction. It is NOT a patch template drawn to size.**



Pyramid Triangle patch template pattern

Fabric Requirements: Cut the patches 1 1/2" by 2" each and then trim using the Pyramid Triangle patch template pattern

Medium and dark prints (A) – 64 patches (scraps)

Lights (B) – 40 patches (scraps)

Inner Border: 1/8 yard

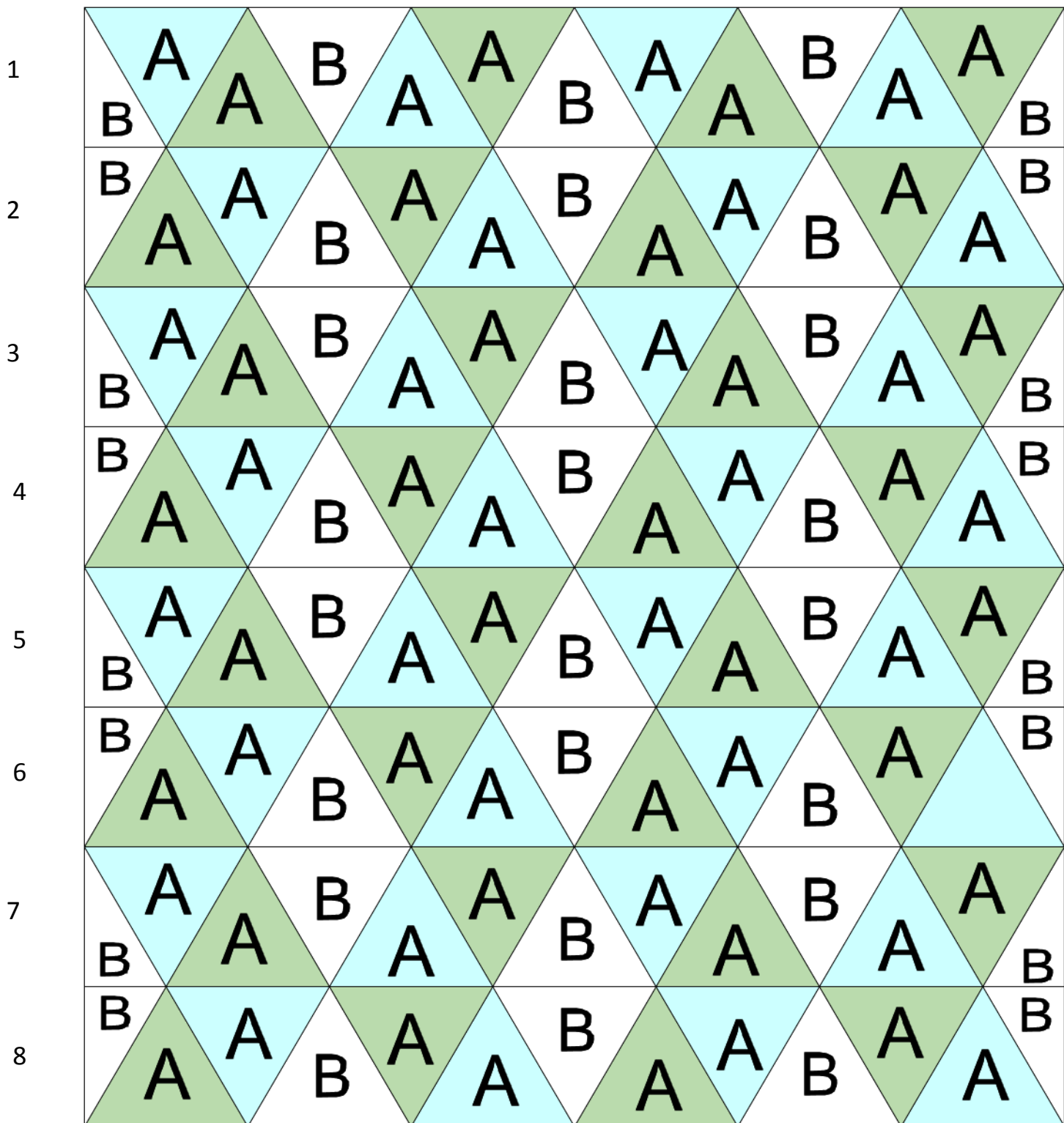
Outer Border: 1/4 yard

Backing: 1 fat quarter

Directions:

- Sew the foundation using the directions given in *Miniatures in Minutes* and the Quilt Layout Diagram given with these directions
- Add borders as desired. (I like to use a 1/4" accent border for the inner border. See the [MISC page](#) of [my website](#) for a method of adding narrow inner borders. The directions are for adding 1/8" borders but you can use the same method to make quarter-inch borders as well).

Quilt Layout Diagram: Pyramid Triangle Zig Zag



Patch Requirements:

A – 64 patches (dark and medium fabrics)

B – 40 patches (light fabrics)