

Terrie Sandelin

Miniatures in Minutes

C&T Publishing

www.terriesandelin.com

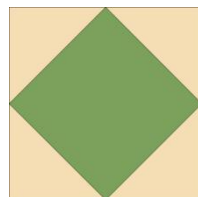


Square-in-a-Square Foundation: Indian Hatchet variation

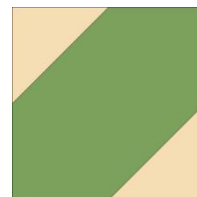
Finished Size: Foundation pieced center – 7 1/2" square

Finished quilt – 11 3/4" square

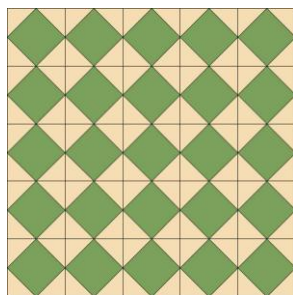
I like to experiment with the foundations from Miniatures in Minutes to see what other patterns I can pull from them. This quilt takes the Square-in-a-Square foundation and adapts the square-in-a-square "block" so that it uses two instead of four triangles.



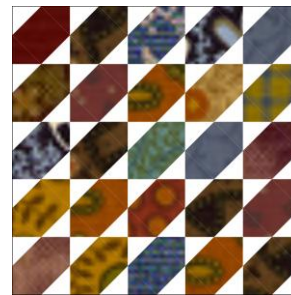
This block



Becomes this block



And this 5 by 5 foundation grid



Can make this quilt

Fabric Requirements:

Foundation and first inner border – light background (1/8th yard) and 25 dark two-inch squares

Second Inner border (optional) – 1/8 yard or scraps

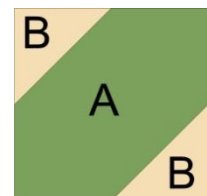
Outer border – 1/4 yard

Binding – 1/8 yard

Backing – 1 fat quarter

Cutting Directions:

- Dark fabrics (piece A) – Cut 25 two-inch squares trimmed to size using template (see directions below for creating template)

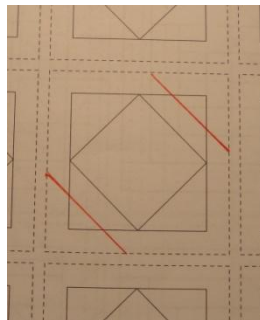


- Light fabric (piece B) – Cut 25 squares 1 5/8" by 1 5/8". Slice in half on the diagonal. Trim to size using either the 3/4" Finished Half-Square Triangle patch template pattern from the pull out sheet in *Miniatures in Minutes* or the ruler method given on page 50.
- Cut border strips to your desired width.

NOTE: I used two 1/4" finished inner borders on my version – the first border is the same background fabric as the triangles and creates an open frame for the inner "blocks."

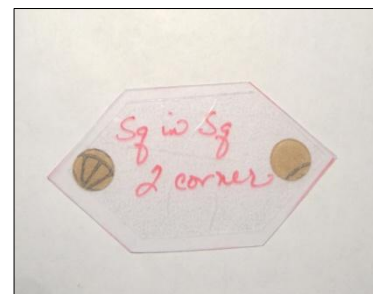
Create a Template for Piece A:

- Place the 1/4 inch mark of your ruler on one of the inner square seam lines of the Square-in-a-Square foundation from *Miniatures in Minutes*. Draw a line.
- Repeat on the opposite side of the square.



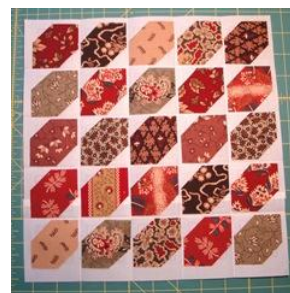
- Trace onto heavy duty template plastic and cut out. Add fabric grips so the template doesn't slide on the fabric when you are trimming your patches to size.

Tip: I write the name of the template on the plastic with permanent marker and then cover it with SelfSeal Laminate so the name doesn't rub off. This way I don't have any trouble identifying the correct template when I make up future projects.



Preparing the Foundation

- As always, place all of the center patches at once.



- Add the triangles using directions 3 and 4 on page 65 and the Foundation Sew Line on page 66 as a guide. In the book, I demonstrate adding the triangles one stitch line at a time. With this quilt, I experimented and added all the triangles at once. I found that this method also worked quite well.



Full Foundation



Close-up

Typically with a Square-in-a-Square foundation, you need to sew across the foundation twice – with this pattern (since there are only two instead of four triangles to add to each "block"), you will only need to sew across the foundation once.

Once the patches have all been added, join the "blocks" following the directions for "Island Joins" given in *Miniatures in Minutes*.

Add borders and quilt as desired. Bind.